



Movexx **T6000**
PARTS & OPTIONS
2019

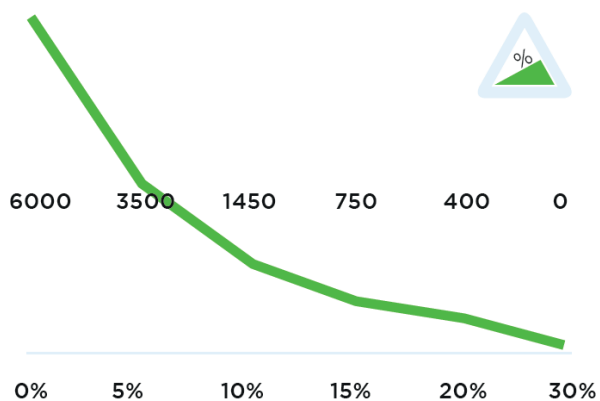
Specifications

Technical details

Frame	Steel, powder coated
Motor	24V DC, 1100W, 90 rpm
Weight	700 kg
Weight trailer	6000 kg
Battery	Built in, 24V, 80Ah
Speed Max.	4,2 km/h
Drive wheels	Full rubber ø250 x 80 mm
Adze height	1269 mm (variable)
Noise level	68,5 dB
To use from	-10 °C / 40 °C
Protection class	Machine IP44

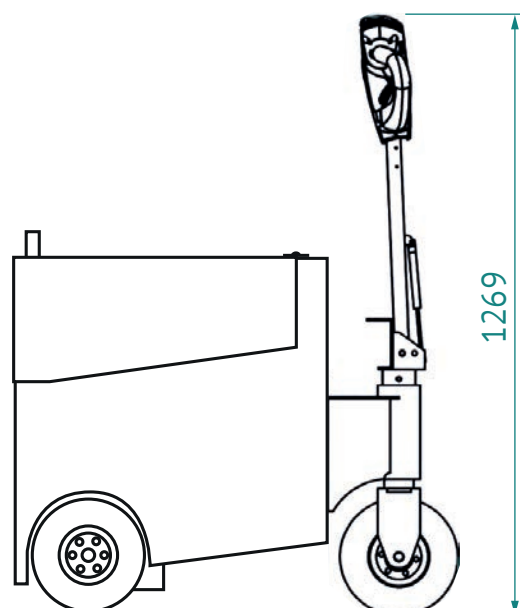
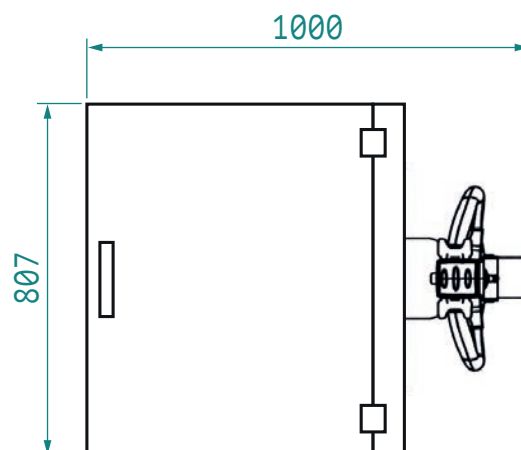
© 2019 Movexx International B.V. The images shown are used for illustration purposes only and may differ from the products indicated. No rights can therefore be derived from it. Printing errors are subjected to change.

Pulling power (in kg)



Measured with a trolley with 2 swivel wheels and 2 fixed castors. Wheel Ø 160 mm.

Dimensions



Standard parts



Motor 1100W / 90rpm
(6911450X) with brake
Item number M6003



LED battery indicator
Item number M0123



Battery AGM-VRLA
12V / 80Ah
Item number M2102



Charger (internal)
AGM battery 24V / 20A
+ external indicator
Item number M6004



Drive wheel, full rubber
Black Ø 250 x 80 mm
Item number M0248



Steering wheel, full rubber
Black Ø 250 x 80 mm
Item number M6019

Standard parts



Adjustable tiller head
Item number M2503



Belly button RED
Item number M0121-BBUT



2 programmable speeds

Options



UPGRADE: wheels
full rubber, non-marking
Gray 3x Ø 250 x 80mm
Item number OPT0358



Horn 90dB for
steel tiller head supp.
M1002-0100
Item number OPT0057

Options



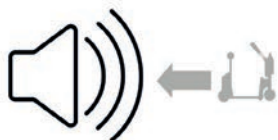
Horn 103dB
Item number OPT0059



Emergency stop complete
Item number OPT0063



Strobe light for
steel tillerhead supp.
Item number OPT0065



Audio signal
(driving backward)
Item number OPT0254



Audio signal
(while driving)
Item number OPT0253



Hour tracker
Item number OPT0056

Options



Antistatic strip
Item number OPT0058



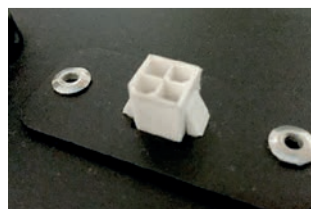
Code lock
Item number OPT0068



Safety fender
Item number OPT0079



Preparation electric hook
Item number OPT0143



Diagnostic connector
Item number OPT0270



Ignition key (unequal)
Item number OPT0145

Options



Ignition key 701 (equal)
Item number OPT0146



On/off rotary switch
Item number OPT0016



Parking floorlabel Ø 60 cm
Item number OPT0245



Customized programming
*Please indicate
specific settings*
Item number OPT0170



Programmer for Italsea
Item number D0003

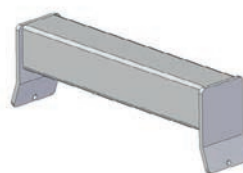


Maximum weight
Item number OPT0172

Options



Drive protection
Item number OPT0153



Welding part for trolley
(profile 50 x 50 mm)
Item number OPT0032



Bolt-on part for trolley
(profile 50 x 50 mm)
Item number OPT0033



Pushbar
Item number OPT0048



Urgent order purchase
Item number SPOED

Batteries & Chargers

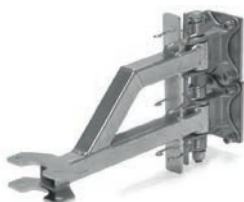


Battery AGM-VRLA
12V / 80Ah
Item number M2102

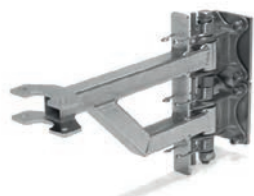


Charger (internal)
AGM battery 24V / 20A
+ external indicator
Item number M6004

Adapters



Base part heavy hook 90°
(lowered)
Item number H7070

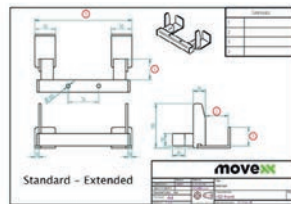


Base part heavy hook 90°
(raised)
Item number H7080

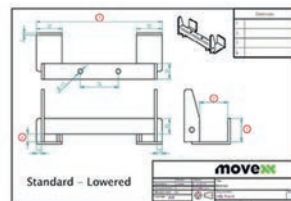


Base part hook 90°
(manual controle)
Item number H7090

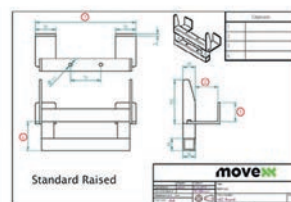
Adapters



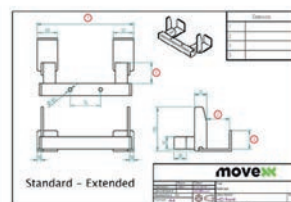
Customized hook
*Please complete
corresponding sheet*
Item number HA5000



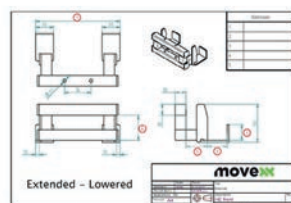
Customized hook (low)
*Please complete
corresponding sheet*
Item number HB5000



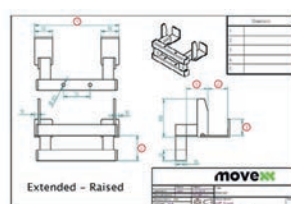
Customized hook (raised)
*Please complete
corresponding sheet*
Item number HC5000



Customized hook
(extended)
*Please complete
corresponding sheet*
Item number HD5000



Customized hook
(extended/low)
*Please complete
corresponding sheet*
Item number HE5000



Customized hook
(extended/raised)
*Please complete
corresponding sheet*
Item number HF5000

Adapters



Hitchball Ø 50 mm
(incl. adapter)
Item number H0068



Hook for LKE platform-
wagon (type X)
Item number H0076



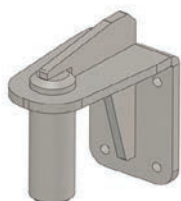
Hook K-Hartwall dolly
(DOS1617/1636, 90°)
Item number H0083



Electric heavy duty
lifting module
Item number OPT0271



Electric locking module
for hook
Item number OPT0129

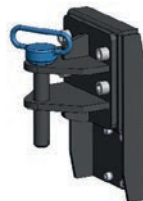


Pen for drawbar Ø35
Item number H0144

Adapters



Trailer coupling, pen Ø25
Item number H0062



Towing hook, pen Ø32
Item number H0146



Towbar for Movexx
e-frame
(suitable for OPT0067)
Item number H0070



Pen for drawbar Ø15
Item number H0071



Pen for drawbar Ø10
Item number H0072



Folding hook Ø16
Item number H0128-D16

Adapters



Folding hook Ø20
Item number H0128-D20



Folding hook Ø25
Item number H0128-D25



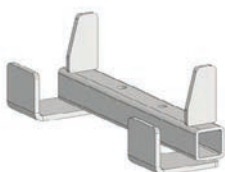
Folding hook Ø27
Item number H0128-D27



Folding hook Ø32
Item number H0128-D32

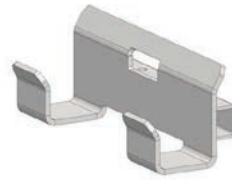


Folding hook Ø35
Item number H0128-D35

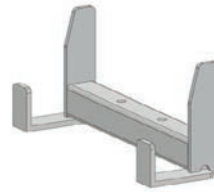


HA270.43.40.0.0
Hook for 40 mm profile
(K-Hartwall pallet trolley;
DOS1870)
Item number H0003

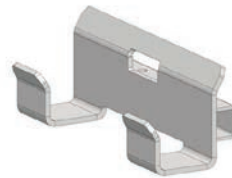
Adapters



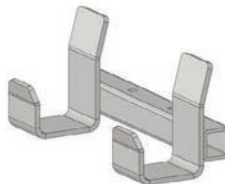
HA245.53.45.15.0
Hook for 50 mm profile
(heavy duty)
Item number H0004



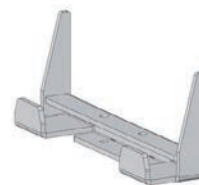
HA250.43.35.0.0
Hook for 40 mm profile
Item number H0051



HB245.43.30.5.0
Hook for 40 mm profile
Item number H0054



HB245.60.45.30.0
Hook for FEIL plastic floor
trolley
Item number H0092



HC250.28.25.0.0
Hook for 25 mm profile
Item number H0094

Most common spareparts



Battery AGM-VRLA
12V / 80Ah
Item number M2102



Charger (internal)
AGM battery 24V / 20A
+ external indicator
Item number M6004



Belly button RED
Item number M0121-BBUT



Switch buttons (2x) green
Item number M0121-KNOP-GROEN



Switch tiller head
excl. buttons
Item number M0121-FLIPPER



Feather/shaft Throttle
Item number M0121-4

Most common spareparts



Switch FAST/SLOW
tiller head green
Item number M0121-SPEED-GROEN



Switch ON/OFF
tiller head green
Item number M0121-AANUIT-GROEN



Torsion spring for hook
Item number M0116



Tube for spring
Item number M0116-1



Italsea drive controller
in 24V / 36 bat,
in 60A / I_{max} 250A
Item number M6002



Carbon brushes (set of 4)
for Motor 1100W
Item number M1040

Most common spareparts



LED battery indicator
(build-in)

Item number M0318



Cable harness 2

Item number M1132



Fuse 5A

Item number M0506



Fuse Mega 200A

Item number M6001



Chassis cable charger

Item no M0158-Stekker



Parallel key 8x7x40 mm

Item number M6016

Most common spareparts



Drive wheel, full rubber
Black Ø 250 x 80 mm

Item number M0248



Drive wheel
full rubber, non-marking
Gray Ø 250 x 80 mm

Item number M0115



Steering wheel, full rubber
Black Ø 250 x 80 mm

Item number M6019



Steering wheel
full rubber, non-marking
Gray Ø 250 x 80 mm

Item number M0696

applications



movexx
driven by brain power

Generatorstraat 17-19
3903 LH Veenendaal
The Netherlands

T +31 (0)318 519900
E info@movexx.com
W www.movexx.com

