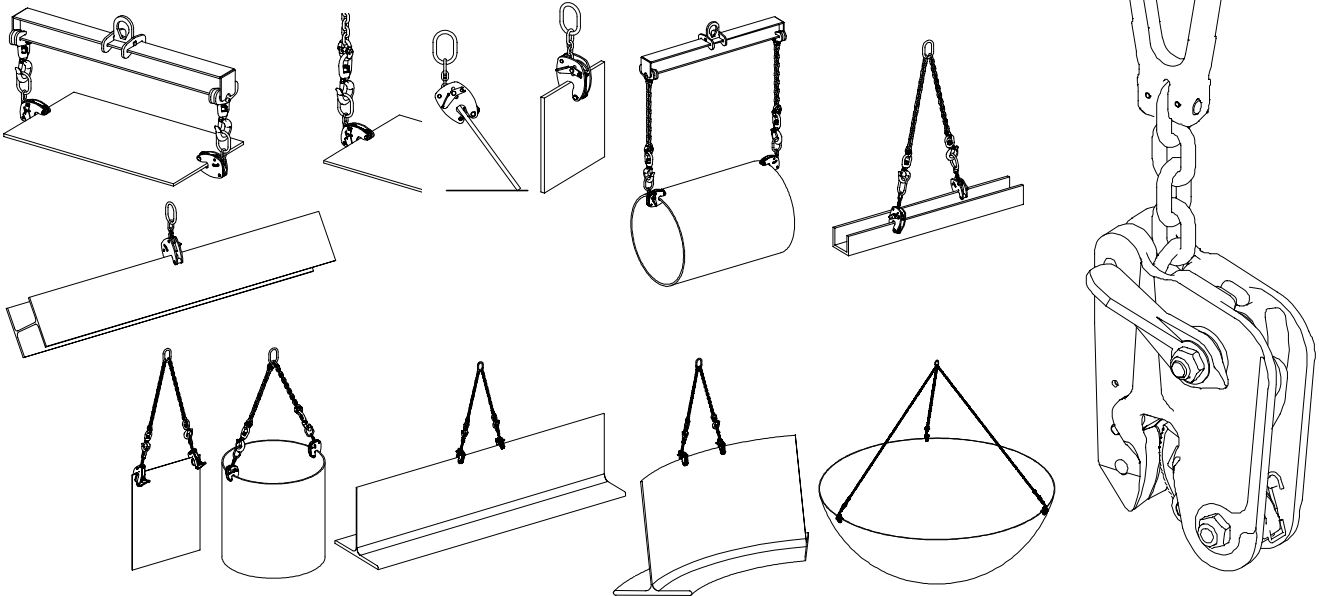


**Applications**

Lifting and revolving of plates, profiles, fabricated assemblies, steel frames ...

**Description**

Clamps fitted with a safety spring mechanism for a permanent contact of the cam onto the piece to be lifted, even when it is being put down. This model also offers an automatic grasping mechanism, ensuring the clamp's locking when the plate is correctly positioned ie. at the back of the clamp's throat. The locking lever does not stick out so that the clamp may be used on the bare ground. The chain enables the revolving and makes the clamp's positioning easier. The corrugated cam only marks one side of the load.

**Functioning**

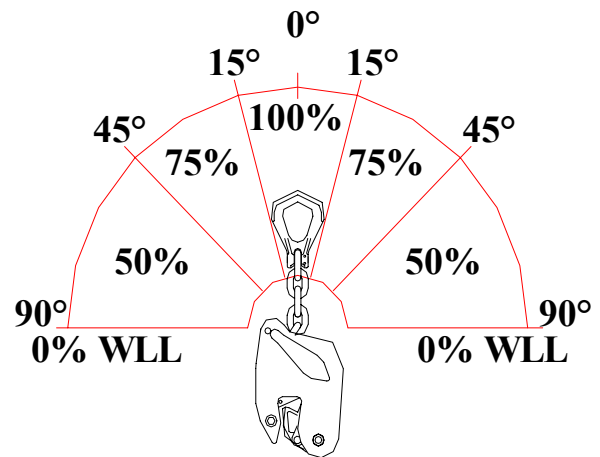
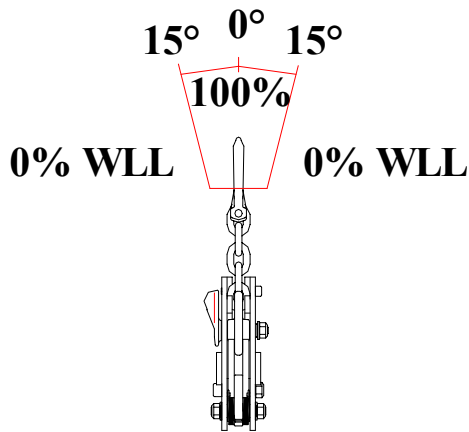
So as to open the clamp's cam, push the locking lever downwards, until the trigger activates ; the lever remains in a down position. When the load is driven home at the back of the clamp's throat, the trigger activates and the clamp locks itself automatically.

The corrugated cam penetrates into the load's material. Lifting ensures proportional clamping, thus avoiding marking the load excessively. To release the clamp, push down the locking lever completely, until it locks in the open position. The clamp may also be used without the automatism being activated. To do so, use the manual opening and closing thanks to the lever without bringing it to its limit stop (trigger not activated). Loads may be grasped horizontally or vertically and revolved in inverse position (90 or 180°).

**Particular instructions**

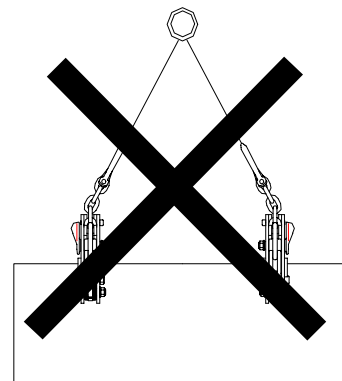
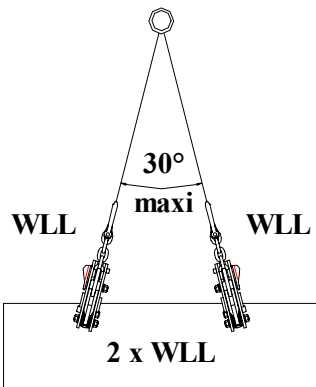
- Do not use for fragile loads.
- Using a NK marks the load.
- The plate or piece to be lifted must always be driven home into the throat of the clamp.
- Load maximum surface hardness 330 HB and minimum tensile strength 20 daN/ mm<sup>2</sup>.
- Some stainless steels are particularly abrasive ; closely check the condition of the cam's teeth in this case.
- For safety's sake, ensure the clamps are always unlocked when not in use (closed cam).
- Never lift more than one plate at a time.
- Apply the downgradation if necessary.
- Working temperature: -20° to +100°C.

- *Lifting function:* do not exceed the allowable 15° angle between the chain and the flanges' plane.

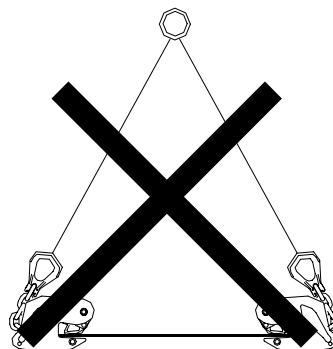
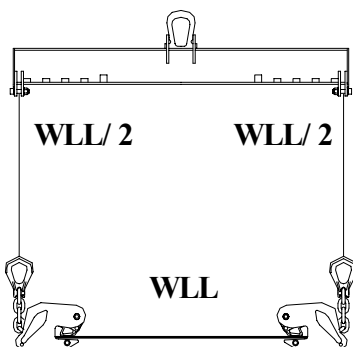


- *Turning function:* for this application, the clamp's working load limit is divided by 2.

- *Function lifting of loads in a vertical position with 2 clamps and no lifting beam:* do not exceed the 30° sling angle.



- *Function lifting of loads in an horizontal position using 2 clamps at least and a lifting beam:* the working load limit of each clamp is divided by 2.



**General characteristics**

- Manufacture without load bearing welds.
- Hot epoxy coating.
- Safety factor: 4 in accordance with the European Materials Handling Federation (1998 FEM 3<sup>rd</sup> edition) ; working group FEM A5 and lifting speed 60 m/ mn.

**Dimensional characteristics**

| Ref.        | Group code | WLL kg | Opening |     | A    |      | K   | B   | C   | D  | E   | F    | G   | H  | I   | J    | Weight kg |
|-------------|------------|--------|---------|-----|------|------|-----|-----|-----|----|-----|------|-----|----|-----|------|-----------|
|             |            |        | min     | max | min  | max  |     |     |     |    |     |      |     |    |     |      |           |
| NK1 0-20    | 50288      | 1 500  | 0       | 20  | 372  | 407  | 185 | 120 | 30  | 8  | 68  | 82,5 | 72  | 13 | 41  | 10,5 | 4         |
| NK1 20-40   | 50298      | 1 500  | 20      | 40  | 385  | 430  | 224 | 151 | 44  | 8  | 81  | 82,5 | 72  | 13 | 41  | 10,5 | 5,8       |
| NK1 40-60   | 50308      | 1 500  | 40      | 60  | 400  | 445  | 250 | 171 | 44  | 8  | 96  | 82,5 | 72  | 13 | 41  | 10,5 | 6,9       |
| NK2 0-30-M  | 50318      | 3 000  | 0       | 30  | 594  | 645  | 278 | 190 | 58  | 13 | 95  | 122  | 117 | 22 | 68  | 20,5 | 12        |
| NK2 30-60   | 50328      | 3 000  | 30      | 60  | 608  | 662  | 310 | 210 | 65  | 13 | 113 | 122  | 117 | 22 | 68  | 20,5 | 16        |
| NK2 60-90   | 50338      | 3 000  | 60      | 90  | 631  | 680  | 338 | 245 | 70  | 13 | 128 | 122  | 117 | 22 | 68  | 20,5 | 17        |
| NK3 0-40    | 50348      | 4 500  | 0       | 40  | 645  | 711  | 362 | 250 | 66  | 13 | 135 | 140  | 117 | 22 | 68  | 20,5 | 26        |
| NK3 40-80   | 50358      | 4 500  | 40      | 80  | 655  | 719  | 395 | 270 | 80  | 13 | 160 | 150  | 117 | 22 | 68  | 20,5 | 28        |
| NK3 80-120  | 50368      | 4 500  | 80      | 120 | 696  | 760  | 437 | 312 | 82  | 13 | 180 | 145  | 117 | 22 | 68  | 20,5 | 32        |
| NK5 0-50    | 50378      | 7 500  | 0       | 50  | 993  | 1108 | 475 | 326 | 98  | 18 | 150 | 235  | 205 | 35 | 100 | 25   | 42,3      |
| NK5 50-100  | 50388      | 7 500  | 50      | 100 | 1048 | 1162 | 518 | 330 | 95  | 18 | 205 | 235  | 205 | 35 | 100 | 25   | 50        |
| NK5 100-150 | 50398      | 7 500  | 100     | 150 | 1080 | 1188 | 562 | 395 | 105 | 18 | 230 | 235  | 205 | 35 | 100 | 25   | 60        |

Dimensions in mm

