

## **Stainless pallet truck - hygienic pallet transport**

Optimum hygiene - with a stainless pallet truck the risk of bacterial contamination is minimised. The stainless products were developed in cooperation with a Creamery for use in environments where the hygiene demands are severe and where the truck is exposed to an aggressive environment and thorough cleaning.

The design prevents industrial injuries and strain on the user - focus is put on safety and ergonomic working conditions of the user. The ergonomically correct shape of the handle ensures a relaxed hold for the user.

High quality is ensured through an extended test programme and in cooperation with experts in Health and Safety.



## Technical Specifications

The stainless pallet truck is available in a stainless-plus and a stainless-semi version

- RF-PLUS: 100% stainless truck
- RF-SEMI: Galvanised truck with stainless fork chassis, handle and wheel forks

Easy to clean and optimum resistance

- acid-resistant, sandblasted and electric polished fork chassis
- strong surface
- corrosion resistant

Long operating life and low maintenance costs

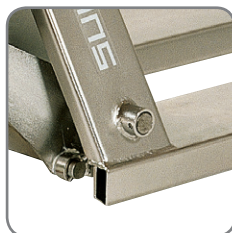
- strong construction
- AISI316L steel used on the fork chassis



RF-PLUS - for the food industry and the pharmaceutical industry with strict hygiene and sanitation requirements.



RF-SEMI - for the food industry in areas, where hygiene demands are not so high, but corrosion resistance important.



Completely open or completely closed truck elements facilitate efficient cleaning.



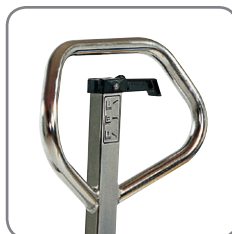
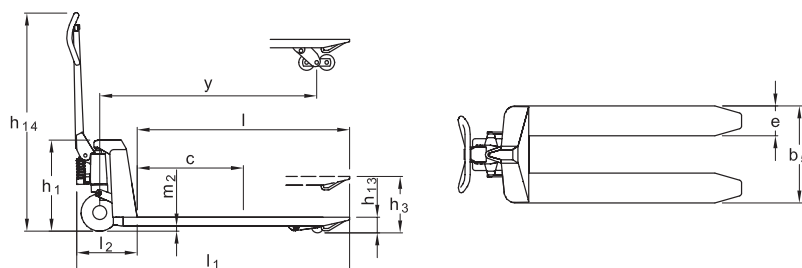
Closed forks mean easy cleaning and few hiding places for bacteria.



The pallet truck is also available in an explosion proof version.

Product (measured in mm)	GL 2071RF-PLUS	GL 2081RF-PLUS	GL 2081RF-SEMI
Capacity in kg	2000		
Lifting height	h <sub>3</sub> 190	200	200
Fork length	l 810, 970, 1140, 1220		
Overall height	h <sub>1</sub> 530		
Fork span	b <sub>5</sub> 520, 680		
Length without forks	l <sub>2</sub> 340		
Overall length	l <sub>1</sub> 1480		
Fork width	e 160		
Wheelbase	y 1170		
Overall height	h <sub>14</sub> 1220		
Lowered height	h <sub>13</sub> 75*	85	85
Load centre	c l/2		
Ground clearance	m <sub>2</sub> 28	38	38
Turning angle of the wheels	230°		
Fork wheels - single	Ø70 x 90	Ø80 x 90	Ø80 x 90
Fork wheels - tandem	Ø80 x 70	Ø80 x 70	Ø80 x 70
Steering wheel	Ø180 x 50	Ø200 x 50	Ø200 x 50
Weight	68 kg (520 x 1140)		

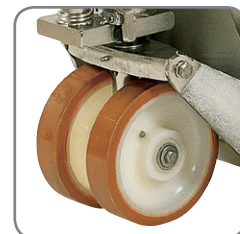
\* Holes in the forks for the wheel holder.



Ergonomic handle ensures the user a relaxed hold.



RF-PLUS pallet truck being used in the pharmaceutical industry.



Wheels with rubber-sealed bearings.

Please ask for specification details or visit our website [www.logitrans.com](http://www.logitrans.com)  
 We also offer tailor-made solutions.