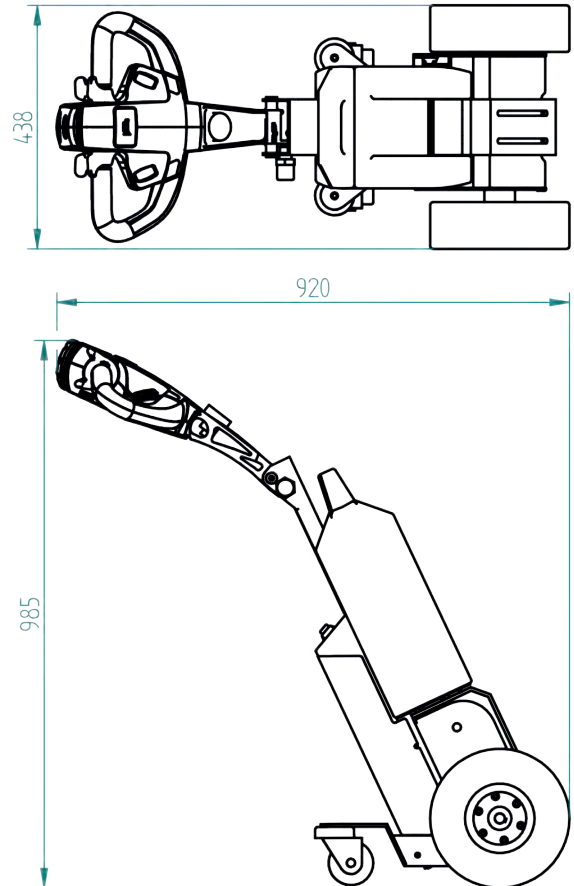




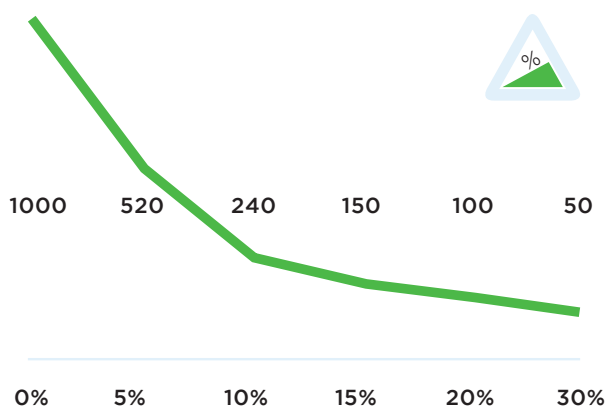
## Specifications T1000

Frame	Steel, powder coated
Drive	24V DC, 300W, 100 rpm
Weight	43 kg (incl. accu)
Weight trailer	Max. 1000 kg
Battery	Exchangable batterypack
Speed	Max. 5 km/h, freely program- mable
Drive wheels	Full rubber $\varnothing 250 \times 80$ mm
Width	438 mm
Length	920mm
Adze height	750-985 mm (variable)
Folded	831 mm
Noise level	63,8 dB
To use from	-40 °C / 70 °C
Protection class	Machine IP44

## Dimensions T1000



## Pulling power T1000 (in kg)



*\*Measured with a trolley with 2 swivelwheels and 2 fixed castors.  
Wheel diameter: 160mm*

## Standard T1000



## Standard parts T1000

Charger 24V 5A incl. charging cable



Item number:  
OPT0009

Batterie AGM 22Ah



Item number:  
OPT0110

Full-rubber drive wheel, black Ø250mm



Dimensions Ø250 x 80 mm

Item number:  
M0248

Adjustable tillerhead



Item number:  
Standardpart 1

Safety switch



Item number:  
Standardpart 2

2 programmable speeds



Item number:  
Standardpart 3

## Standard parts T1000

Motor T1000, without brake



Item number:  
M1032

LED battery indicator LBF318-24V



Item number:  
M0123

## Options T1000



Extra plug to recharge the battery

*for on-machine batterie charging*

Article number:  
OPT0001



Charger 24V 5A incl. charging cable

Article number:  
OPT0009



Battery Lithium-LiFePO4, 36Ah GREEN

Article number:  
OPT0106



Battery upgrade to Lithium-LiFePO4, 36Ah

*iso AGM Battery (!) Including upgrade to lithium charger 10A*

Article number:  
OPT0107



Batterie AGM 22Ah

Article number:  
OPT0110



Upgrade Nonmarking tires (2) yellow CR

Article number:  
OPT0357



Upgrade Nonmarking tires (2) grey

Article number:  
OPT0359



Upgrade Foam filled tires (2) black

Article number:  
OPT0360



Upgrade Foamfilled tyres Nonm. (2) grey

Article number:  
OPT0361



Electromagnetic parking-brake T1000

Article number:  
OPT0004



Horn 90dB

Article number:  
OPT0045



Emergency stop complete

Article number:  
OPT0063

## Options T1000



Strobelight cast iron tiller head

Article number:  
OPT0076



Acoustic signal driving backwards

Article number:  
OPT0254



Tool/coupling box

Article number:  
OPT0014



Radio remote control T1000

*6 channel*

Article number:  
OPT0026-1



Counterweight back T1000

Article number:  
OPT0043



Front counterweight 30kg

Article number:  
OPT0044

hour counter complete



Article number:  
OPT0056

Antistatic strip



Article number:  
OPT0058

Code lock



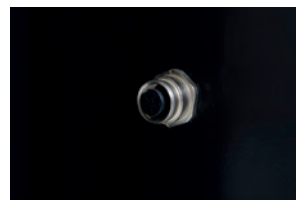
Article number:  
OPT0068

Document holder



Article number:  
OPT0127

Preparation electric hook



Article number:  
OPT0143

Ignition key unequal key



Article number:  
OPT0145

## Options T1000

Ignition key equal key 701



Article number:  
OPT0146

Customized programming



*please indicate specific settings*

Article number:  
OPT0170

Programmer for Italsea



Article number:  
D0003

Wall mounted Charger, for AGM battery



*Complete charger-unit Including AGM battery charger (5 Ah)*

Article number:  
OPT0015

Charging Station for 1 Lithium battery



*Wallmounting chargerstation with lithium battery charger 29,2 V, 10 A*

Article number:  
OPT0023

Charging station for 5 Lithium batteries



Article number:  
OPT0029

Charging station for 5 batteries



*Upright standing charging station with five separate AGM battery chargers 24 V, 5 A*

Article number:  
OPT0039

Attachment for trolley (Caddie)



Article number:  
OPT0040

Frame for 4-wheel waste container



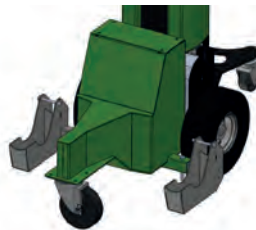
Article number:  
OPT0085

Upgrade to charging station



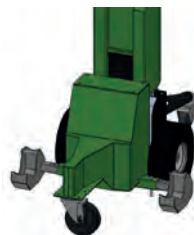
Article number:  
OPT0261

Adaptor for Airport Trolleys



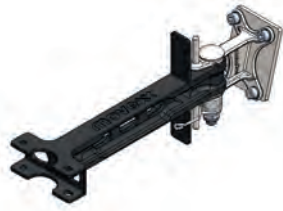
Article number:  
OPT0325

Adaptor for shopping trolleys on T1000



Article number:  
OPT0326

## Options T1000



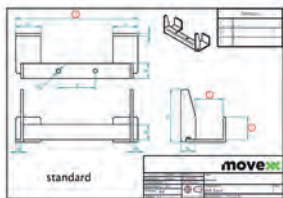
Base part hook 15°

Article number:  
H7010



Base part hook 15° double spring

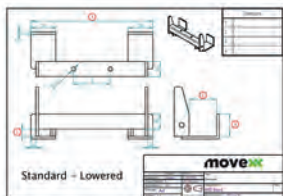
Article number:  
H7020



Customized Hook

*Please complete corresponding sheet (!)*

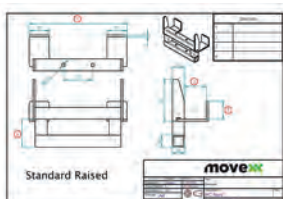
Article number:  
HA5000



Customized Hook (LOWE-RED)

*Please complete corresponding sheet (!)*

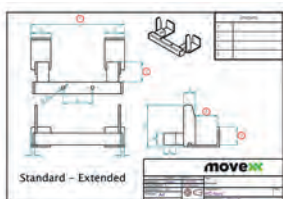
Article number:  
HB5000



Customized Hook (RAI-SED)

*Please complete corresponding sheet (!)*

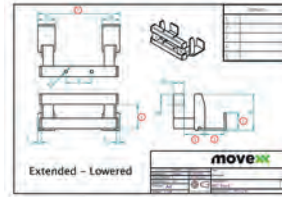
Article number:  
HC5000



Customized Hook (EX-TENDED)

*Please complete corresponding sheet*

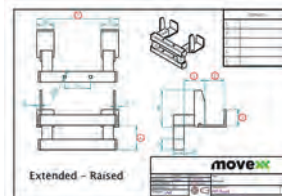
Article number:  
HD5000



Customized Hook (EX-TENDED / LOWERED)

*Please complete corresponding sheet*

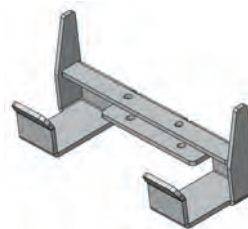
Article number:  
HE5000



Customized Hook (EX-TENDED / RAISED)

*Please complete corresponding sheet*

Article number:  
HF5000



HA245.55.45.15.0

*Fronthook for 50mm. Profile, Heavy Duty Hook*

Article number:  
H0004



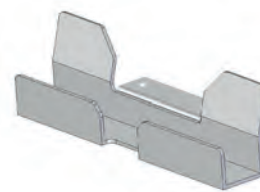
hitch ball coupling Ø 50mm incl. adapter

Article number:  
H0068



Hook for LKE Platformwagen Type X

Article number:  
H0076



HA250.35.30.0.0

*Hook for 30 mm. Profile For furniture trolley*

Article number:  
H0097

## Options T1000

### Hook locking system



Article number:  
OPT0012

### Electric lifting module for Hooks



Article number:  
OPT0050

### Electrical locking module for hook



Article number:  
OPT0129

### Movexx Parking label



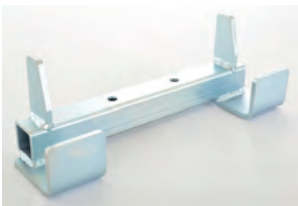
Article number:  
OPT0245

### Across Sales Area fee 5%



Article number:  
FEE

### HA270.43.40.0.0



*Fronthead for 40mm. profile. Hartwall Pallet-Trolley (DOS1870)*

Article number:  
H0003

### HA250.43.35.0.0



*Front hook 40mm. profile*

Article number:  
H0051

### HB245.43.30.5.0



*Fronthead for 40mm. profile*

Article number:  
H0054

### HD370.73.35.0.40



*Fronthead for 70mm. profile (Flower container)*

Article number:  
H0055

### HA245.142.35.0.0



*Fronthead for 140mm. profile (wooden trolley)*

Article number:  
H0057

### HA250.23.27.0.0



*Fronthead for 20mm. profile*

Article number:  
H0067

### Hook K-Hartwall dolly DOS1617/1636, 25°



Article number:  
H0086



## Options T1000



HD245.10.35.0.50

*Fronthook for Hatchery trolleys (EMKA)*

Article number:  
H0090



HB245.60.45.30.0

*Fronthook for FEIL plastic floor trolley*

Article number:  
H0092



Vacuum hook for stainless steel trolleys

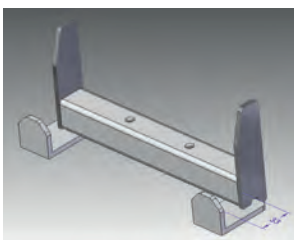
Article number:  
H0093



HA250.28.30.0.0

*Fronthook for 25mm. profile*

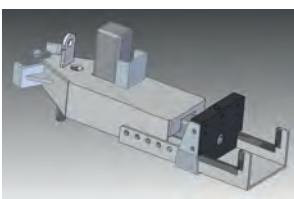
Article number:  
H0094



HA250.33.30.0.0

*Fronthook for 30mm. profile*

Article number:  
H0095



Clamping Hook Stainless steel

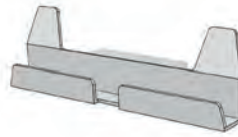
Article number:  
H0096



HF242.23.30.15.20

*Fronthook for 20 mm. profile (Hospital Logistics)*

Article number:  
H0116



HA250.23.20.0.0

*Hook for 20 mm. profile*

Article number:  
H0123



HB135.18.20.35.0

*Fronthook for 15mm. profil (Hartwall Dolly 400x600)*

Article number:  
H0125



Coupling nettingscontainer,  
Nettings 6mm

Article number:  
K0007



Coupling rollcontainer

*Nettings 10mm.*

Article number:  
K0008



Coupling Rollcontainer

*Width 42 mm.*

Article number:  
K0010

## Options T1000

### Coupling Rollcontainer



*Suitable for rack Ø6 mm.(Deli XL)*

**Article number:**  
K0012

### Coupling for furniture trolleys



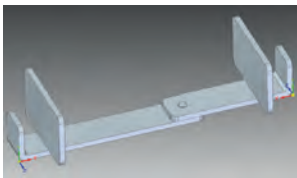
**Article number:**  
K0014

### Coupling with carabiners



**Article number:**  
K0026

### Coupling jaw 20mm



**Article number:**  
K0027

### Coupling trolleys side R28



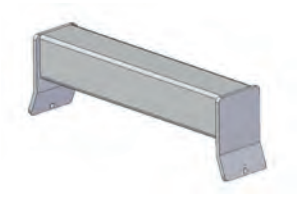
**Article number:**  
K0028

### Coupling Open Front-Closed Backside



**Article number:**  
K0030

### Welding part for trolley's



*Profile 50x50mm.*

**Article number:**  
OPT0032

### Bolt-on part for Trolley's



*Profile 50x50mm.*

**Article number:**  
OPT0033

### Angle limitation hook 15 degrees



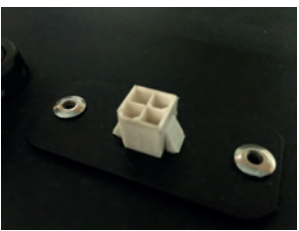
**Article number:**  
OPT0218

### Protective elec connection T1000



**Article number:**  
OPT0263

### Diagnostic connector



**Article number:**  
OPT0270

### Frame for 770L. and 240L. bins



**Article number:**  
OPT0375



Lifting module and clamping hook T1000

Article number:  
OPT0381

---



Urgent order surcharge

Article number:  
SPOED

---

---

---

---

---

---

---

---

---

---



**Movexx International B.V.**

Generatorstraat 17

3903 LH Veenendaal

Tel +31 (0)318 51.99.00

Fax +31 (0)318 50.80.20

E-mail info@movexx.nl