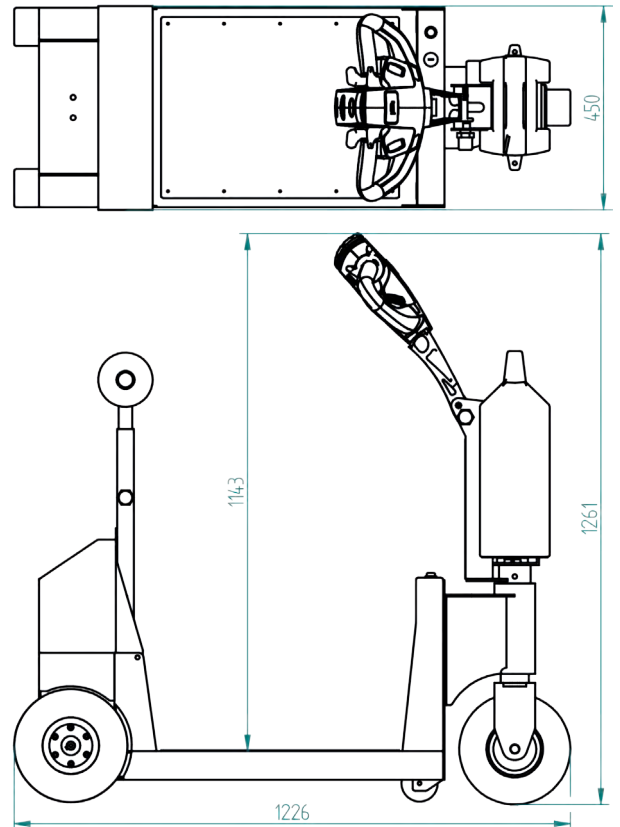




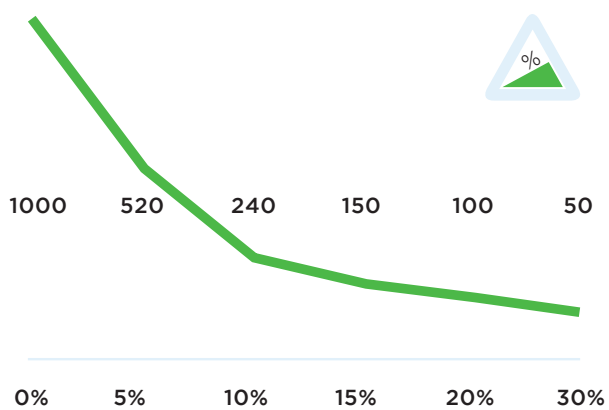
## Specifications T1000-PLATFORM

Frame	Steel, powder coated
Drive	24V DC, 420W, 140 rpm
Weight	120 kg
Weight trailer	1000 kg
Battery	Exchangable batterypack
Speed	Max. 6,6 km/h
Drive wheels	Full rubber ø250x80 mm
Width	450mm
Length	1226mm
Adze height	750-1261mm
Folded	900mm
Noise level	63,8 dB
To use from	-40 °C / 70 °C
Protection class	Machine IP44

## Dimensions T1000-PLATFORM



## Pulling power T1000-PLATFORM (in kg)



\*Measured with a trolley with 2 swivelwheels and 2 fixed castors. Wheel diameter: 160mm

## Standard T1000-PLATFORM



## Standard parts T1000-PLATFORM

Battery charger Lithium  
29,4V-10A



Item number:  
OPT0013

Battery Lithium-LiFePO4,  
36Ah GREEN



Item number:  
OPT106

Full-rubber drive wheel,  
black Ø250mm



Dimensions Ø250 x 80 mm

Item number:  
M0248

Adjustable tillerhead



Item number:  
Standardpart 1

2 programmable speeds



Item number:  
Standardpart 3

## Standard parts T1000-PLATFORM

Engine 420W 140RPM  
BRAKE 6911439X



Item number:  
M1034

LED battery indicator  
LBF318-24V



Item number:  
M0123

## Options T1000-PLATFORM



Motor 530W 170RPM+-  
REM instead 420W

Article number:  
OPT0025



Battery Lithium-LiFePO4,  
36Ah GREEN

Article number:  
OPT0106



Upgrade Nonmarking  
tires (3) yellow CR

Article number:  
OPT0356



Upgrade Nonmarking  
tires (3) grey

Article number:  
OPT0358



Horn 90dB

Article number:  
OPT0045



Horn 103 dB

Article number:  
OPT0059



Emergency stop complete

Article number:  
OPT0063



Strobelight cast iron  
tiller head

Article number:  
OPT0076



Safety fender for steering  
wheel

*Wheel Shield*

Article number:  
OPT0079



Strobelight

Article number:  
OPT0120



Blue Safety spot

Article number:  
OPT0251



Acoustic signal while  
driving

Article number:  
OPT0253

## Options T1000-PLATFORM



Acoustic signal driving backwards

Article number:  
OPT0254



Tool/coupling box

Article number:  
OPT0014



Radio remote control

*6 channel*

Article number:  
OPT0026-3



hour counter complete

Article number:  
OPT0056



Antistatic strip

Article number:  
OPT0058



Code lock

Article number:  
OPT0068



Document holder

Article number:  
OPT0127



Preparation electric hook

Article number:  
OPT0143



Ignition key unequal key

Article number:  
OPT0145



Ignition key equal key 701

Article number:  
OPT0146



Customized programming

*please indicate specific settings*

Article number:  
OPT0170



Programmer for Italsea

Article number:  
D0003

## Options T1000-PLATFORM



Wall mounted Charger, for AGM battery

*Complete charger-unit Including AGM battery charger (5 Ah)*

**Article number:**  
OPT0015



Charging Station for 1 Lithium battery

*Wallmounting chargerstation with lithium battery charger 29,2 V, 10 A*

**Article number:**  
OPT0023



Charging station for 5 Lithium batteries

**Article number:**  
OPT0029



Charging station for 5 batteries

*Upright standing charging station with five separate AGM battery chargers 24 V, 5 A*

**Article number:**  
OPT0039



U-Frame for waste container 1000/1100L

**Article number:**  
OPT0088



Upgrade to charging station

**Article number:**  
OPT0261



Base part hook 90°

**Article number:**  
H7030



Base part hook 90° double spring

**Article number:**  
H7040



Base part hook 90° manual control

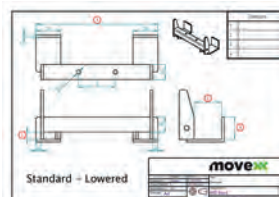
**Article number:**  
H7090



Customized Hook

*Please complete corresponding sheet (!)*

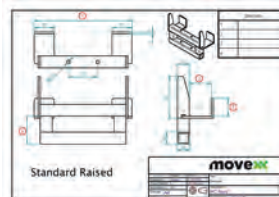
**Article number:**  
HA5000



Customized Hook (LOW-RED)

*Please complete corresponding sheet (!)*

**Article number:**  
HB5000



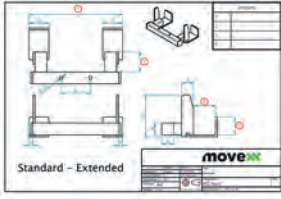
Customized Hook (RAISED)

*Please complete corresponding sheet (!)*

**Article number:**  
HC5000



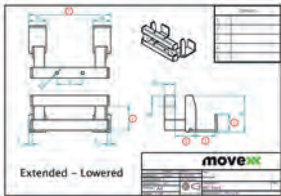
## Options T1000-PLATFORM



### Customized Hook (EXTENDED)

*Please complete corresponding sheet*

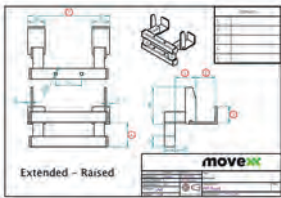
**Article number:**  
HD5000



### Customized Hook (EXTENDED / LOWERED)

*Please complete corresponding sheet*

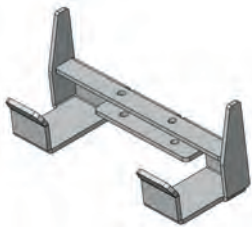
**Article number:**  
HE5000



### Customized Hook (EXTENDED / RAISED)

*Please complete corresponding sheet*

**Article number:**  
HF5000



### HA245.55.45.15.0

*Fronthook for 50mm. Profile, Heavy Duty Hook*

**Article number:**  
H0004



### Pen for Drawbar Ø16 incl. Backplate

**Article number:**  
H0064



### hitch ball coupling Ø 50mm incl. adapter

**Article number:**  
H0068



### Towbar for Movexx E-Frame

*Suitable for OPT0067*

**Article number:**  
H0070



### Towbar + pin Ø15mm incl. Back plate

**Article number:**  
H0071



### Pen for Drawbar Ø10 incl. Backplate

**Article number:**  
H0072



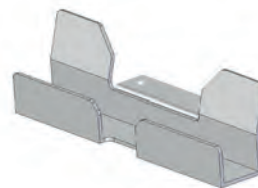
### Hook for LKE Platformwagon Type X

**Article number:**  
H0076



### Hook K-Hartwall dolly DOS1617/1636 90°

**Article number:**  
H0083



### HA250.35.30.0.0

*Hook for 30 mm. Profile For furniture trolley*

**Article number:**  
H0097

## Options T1000-PLATFORM

Folding Hook, diameter 16



Article number:  
H0128-D16

Folding Hook, diameter 20



Article number:  
H0128-D20

Folding Hook, diameter 25



Article number:  
H0128-D25

Folding Hook, diameter 27



Article number:  
H0128-D27

Folding Hook, diameter 32



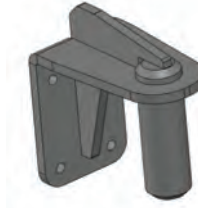
Article number:  
H0128-D32

Folding Hook, diameter 35



Article number:  
H0128-D35

Pin drawbar Ø35 complete



Article number:  
H0144

Hook locking system



Article number:  
OPT0012

Electric lifting module for Hooks



Article number:  
OPT0050

Folding hook for flower trolleys



Article number:  
OPT0099

Electrical locking module for hook



Article number:  
OPT0129

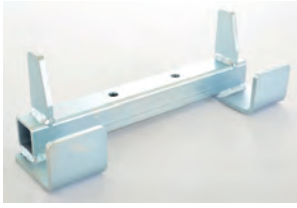
Movexx Parking label



Article number:  
OPT0245



## Options T1000-PLATFORM



HA270.43.40.0.0

*Fronthook for 40mm. profile. Hartwall Pallet-Trolley (DOS1870)*

**Article number:**  
H0003



HA250.43.35.0.0

*Front hook 40mm. profile*

**Article number:**  
H0051



HD370.73.35.0.40

*Fronthook for 70mm. profile (Flower container)*

**Article number:**  
H0055



HA245.142.35.0.0

*Fronthook for 140mm. profile (wooden trolley)*

**Article number:**  
H0057



Trailer coupling with frame pen Ø25mm

**Article number:**  
H0062



HA250.23.27.0.0

*Fronthook for 20mm. profile*

**Article number:**  
H0067



HB245.60.45.30.0

*Fronthook for FEIL plastic floor trolley*

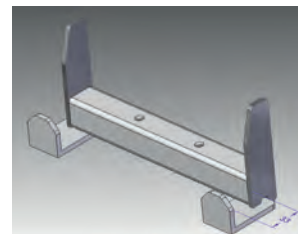
**Article number:**  
H0092



HA250.28.30.0.0

*Fronthook for 25mm. profile*

**Article number:**  
H0094



HA250.33.30.0.0

*Fronthook for 30mm. profile*

**Article number:**  
H0095



HF242.23.30.15.20

*Fronthook for 20 mm. profile (Hospital Logistics)*

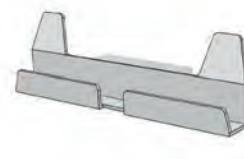
**Article number:**  
H0116



Spring hitch 16 mm

*Pin 16 mm.*

**Article number:**  
H0120



HA250.23.20.0.0

*Hook for 20 mm. profile*

**Article number:**  
H0123

## Options T1000-PLATFORM



Coupling nettingscontainer,  
Nettings 6mm

*Nettings 6mm*

Article number:  
K0007



Coupling rollcontainer

*Nettings 10mm.*

Article number:  
K0008



Coupling Rollcontainer

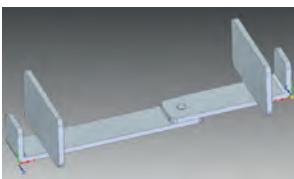
*Width 42 mm.*

Article number:  
K0010



Coupling with carabiners

Article number:  
K0026



Coupling jaw 20mm

Article number:  
K0027



Coupling trolleys side R28

Article number:  
K0028



Coupling Open Front-Closed Backside

Article number:  
K0030



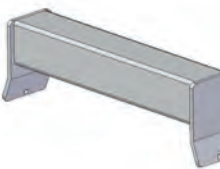
Storage compartment lid  
T1000-PLATFORM

Article number:  
OPT0007



Winch rear T1000-PLATFORM

Article number:  
OPT0008



Welding part for trolley's

*Profile 50x50mm.*

Article number:  
OPT0032



Bolt-on part for Trolley's

*Profile 50x50mm.*

Article number:  
OPT0033

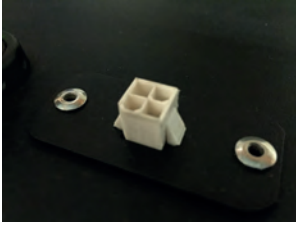


Angle limitation

*Stainless steel*

Article number:  
OPT0244

## Options T1000-PLATFORM



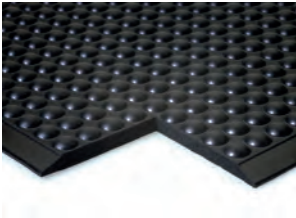
Diagnostic connector

Article number:  
OPT0270



Frame plastic crate  
T1000-PLATFORM

Article number:  
OPT0281



Detection matt for PLAT-  
FORM machine

Article number:  
OPT0334



Treadplate rubber  
T1000-PLATFORM

Article number:  
OPT0383



LED lights front and rear  
(1)

Article number:  
OPT0393



LED lights front and rear  
(2)

Article number:  
OPT0397

Urgent order surcharge



Article number:  
SPOED



## Movexx International B.V.

Generatorstraat 17

3903 LH Veenendaal

Tel +31 (0)318 51.99.00

Fax +31 (0)318 50.80.20

E-mail [info@movexx.nl](mailto:info@movexx.nl)